

Anexo I – Regulamento de Uniformes e Fardamento

Casaco

(masculino)

Frente

Costas

Lateral



Fig.001

(feminino)

Frente

Costas

Lateral

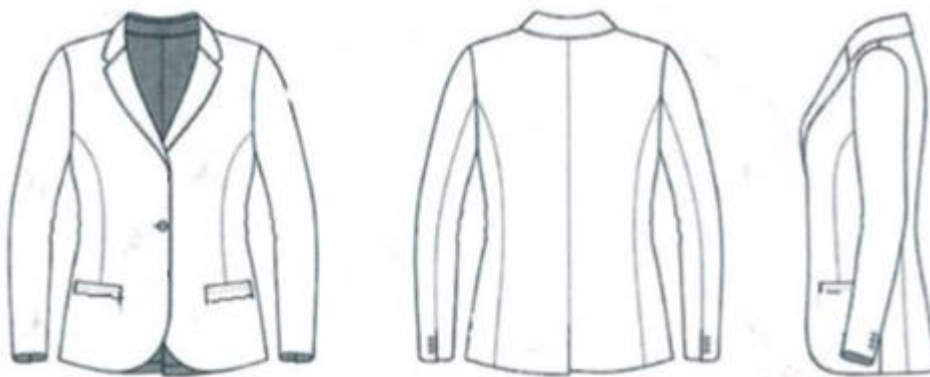


Fig.002

Calça

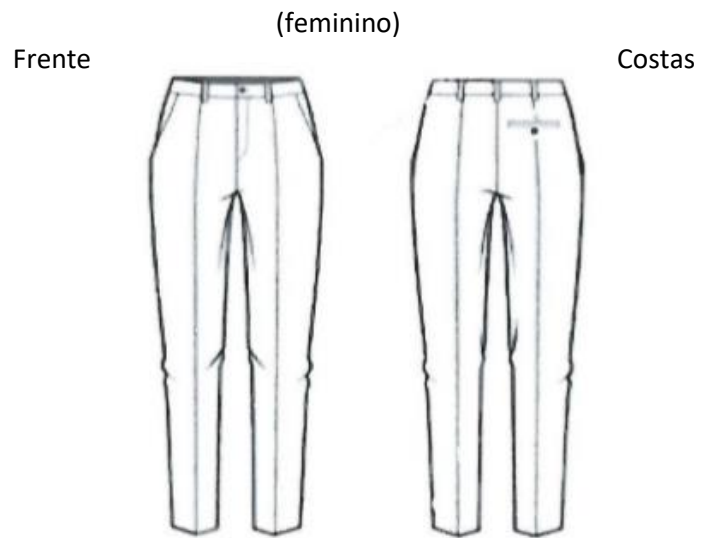
(masculino)

Frente

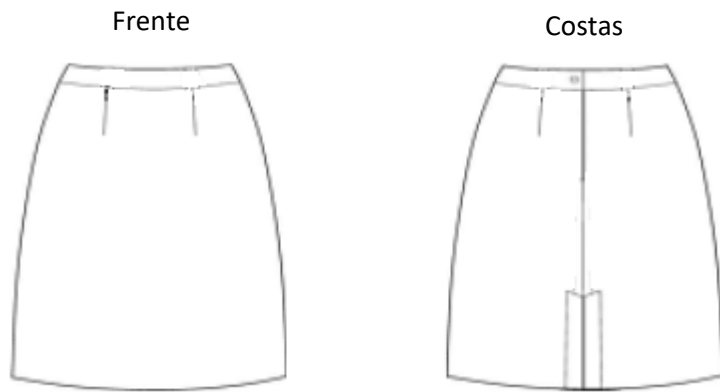
Costas



Fig.003

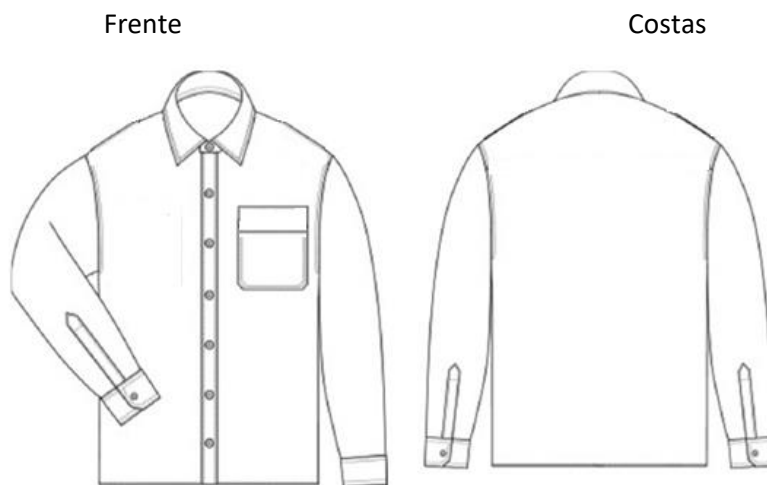


Saia



Camisa manga comprida

(masculino)



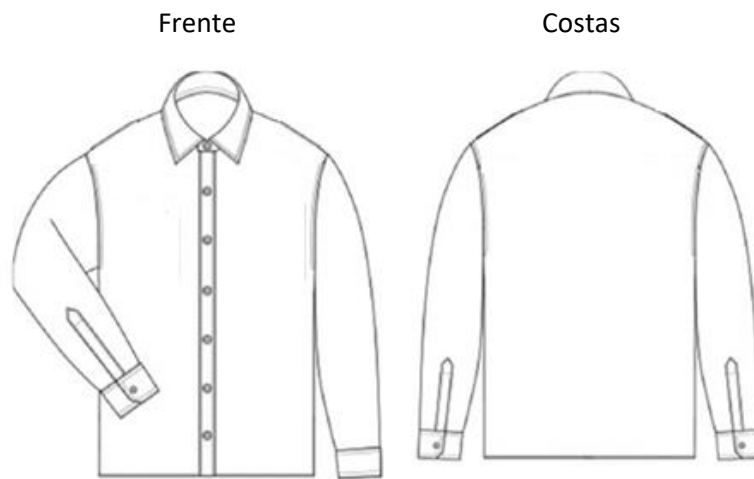


Fig.007

(feminino)

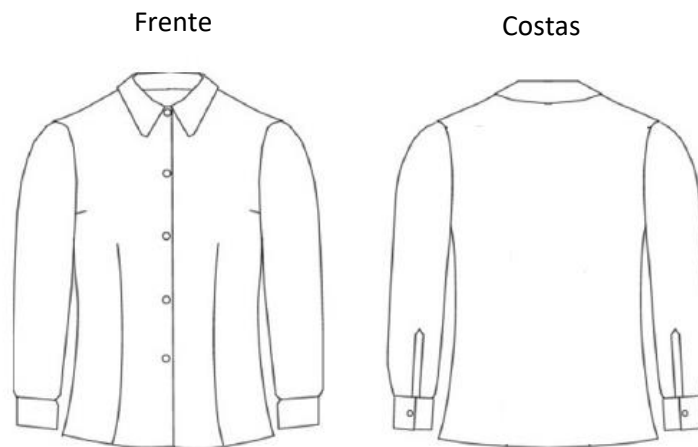


Fig.008

Camisa manga curta

(masculino)

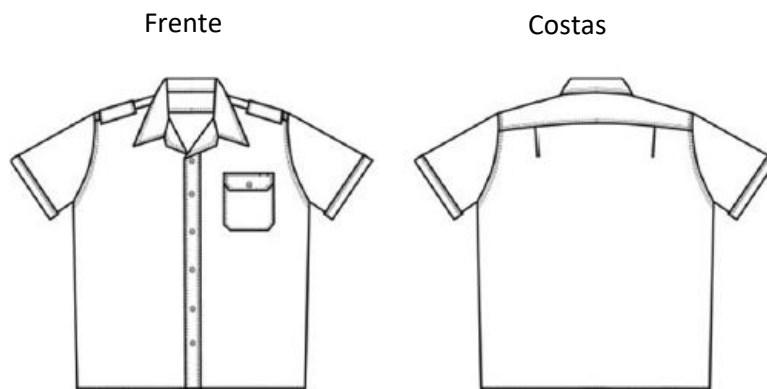


Fig.009

(feminino)

Frente

Costas

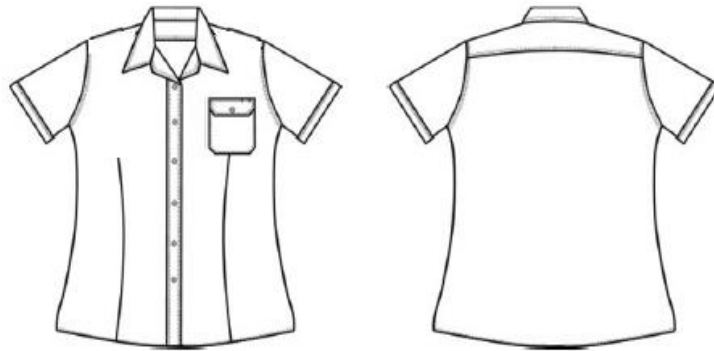


Fig.010

Pólo Manga Comprida

Frente

Costas

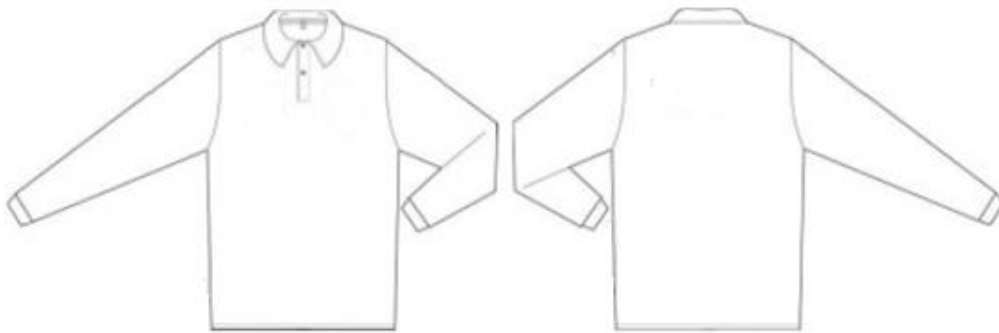


Fig.011

Pólo Manga Curta

Frente

Costas

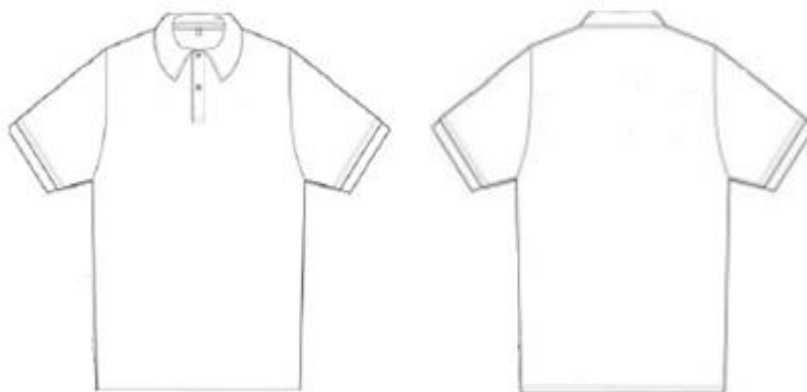


Fig.012

Pullover

(masculino e feminino)

Frente

Costas



Fig.013

Cardigan

(masculino)

Frente

Costas

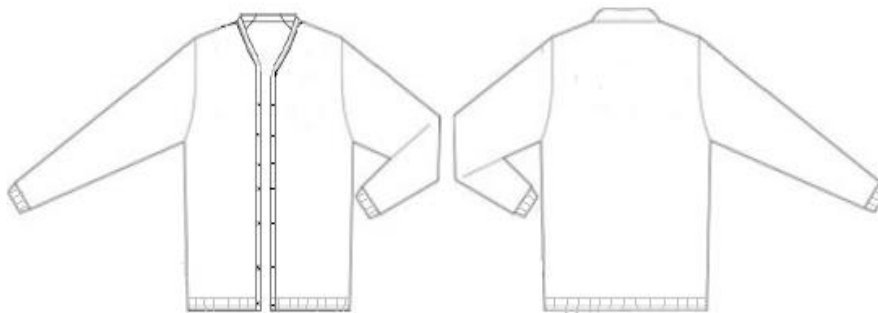


Fig.014

(feminino)

Frente

Costas

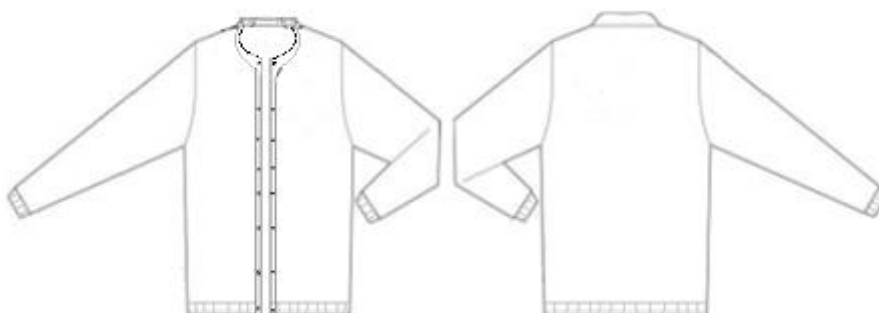


Fig.015

Gravata

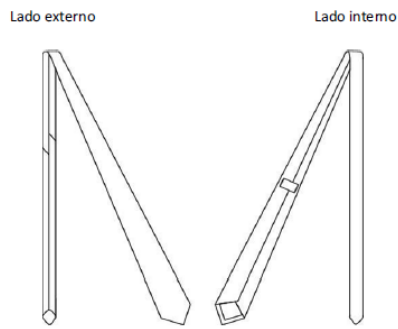


Fig.016

Lenço

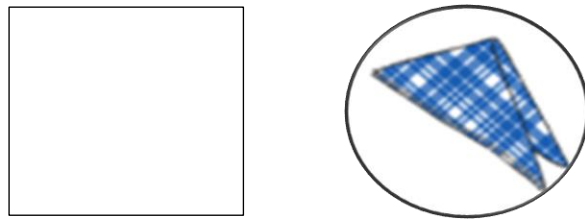


Fig.017

Sapatos

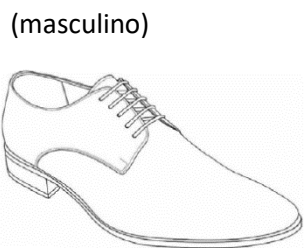


Fig.018

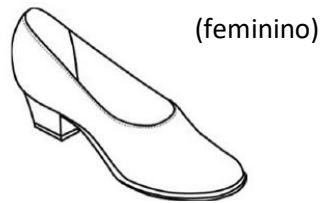


Fig.019

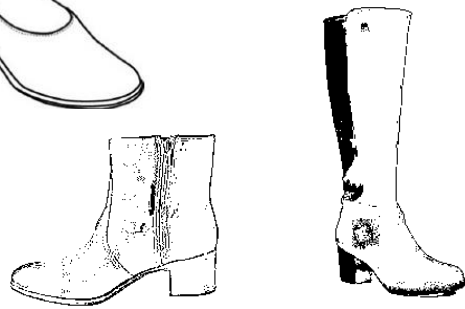


Fig.020

Meias/Collants



Fig.021

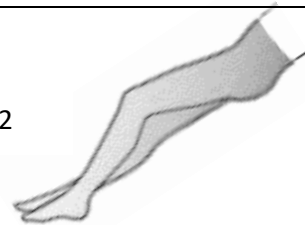


Fig.022

Jaleca de Cozinha

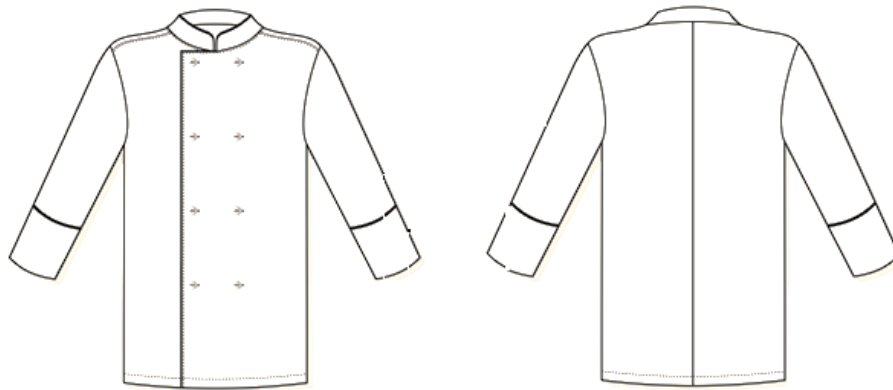


Fig.023

Calça de Cozinha

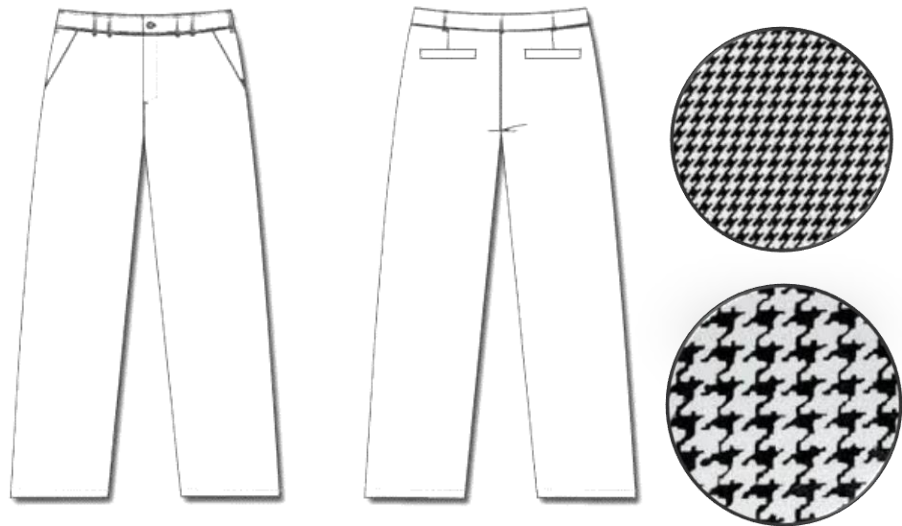


Fig.024

Avental com peitilho

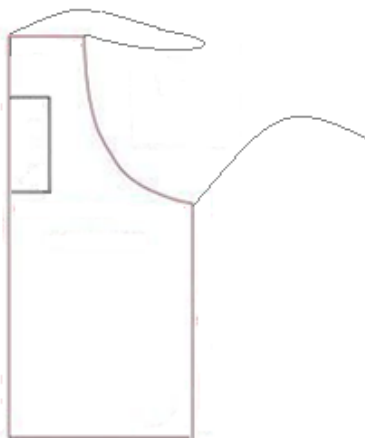


Fig.025

Barrete de Cozinheiro



Fig.026

Lenço de pescoço

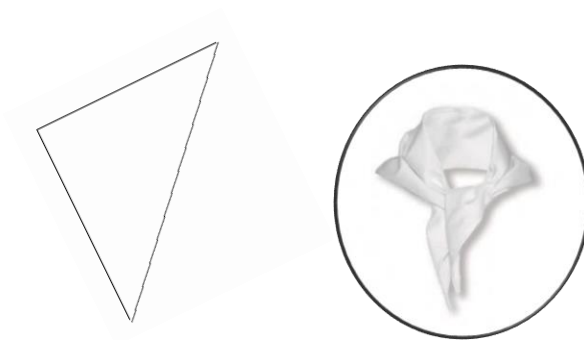


Fig.027

Sapato ou soca profissional de cozinha



Fig.028



Fig.029

Meias



Fig.030

Avental

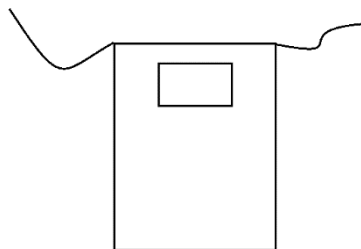


Fig.031



Sapatos



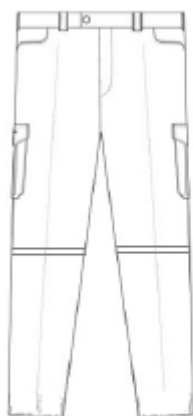
Fig.032



Fig.033

Calça Bermuda

Frente



Costas

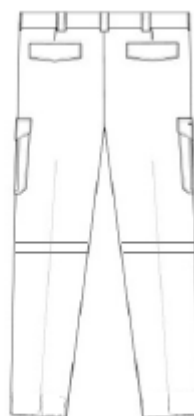


Fig.034

(é permitida a utilização da calça sem destaque da parte inferior)

Camisola Suadouro

Frente



Fig.035

Costas



(é permitida a utilização de modelo sem gorro e/ou com fecho de correr)